

NOTICE OF PUBLIC INFORMATION CENTRE #2

By Henvey Inlet Wind LP for a Transmission Line

Name: Henvey Inlet Wind Transmission Line

Location: District of Parry Sound, Ontario

Description:

Henvey Inlet Wind LP (HIW), a limited partnership between Pattern Renewable Holdings Canada ULC and Nigig Power Corporation, has commenced planning for the construction of a Transmission Line with a voltage of up to 500 kilovolts (kV). The HIW Transmission Line will deliver electricity generated from the Henvey Inlet Wind Energy Centre (HIWEC), located on the Henvey Inlet First Nation Reserve No. 2 (HIFN I.R. #2), to the Ontario electricity grid. Two potential Transmission Line routes are currently being considered. The first route extends east from the HIWEC connecting to the existing 500 kV Hydro One Networks Inc. (HONI) transmission line (approximately 20 kilometres (km)). The second route is approximately 90 km and travels south from HIFN I.R. #2, generally parallel to the future Highway 69 alignment before diverting southeast from Highway 69 to follow the existing 500 kV HONI corridor. This route connects to the HONI system at the 230 kV line southeast of Parry Sound. Both routes may require the construction of a switching station to connect to the HONI line.

The transmission line will undergo a "Category B" Environmental Review as described in the Ministry of the Environment and Climate Change's "Guide to Environmental Assessment Requirements for Electricity Projects" (January 2011). At the end of the Environmental Review, an Environmental Review Report (ERR) will be made available for a 30-day review and comment period. The ERR will include a review of existing conditions, potential effects, mitigation measures and document stakeholders input and consultation activities.

Invitation to Public Information Centre (PIC) #2:

HIW is hosting the second PIC regarding the proposed Transmission Line on Saturday, August 1, 2015, at two different locations. Members of the public, Anishinabek and other Aboriginal communities, agencies and all other interested parties are encouraged to attend the PIC at either location. The purpose of this event is to provide an opportunity to review and provide comments on the studies and investigations that have been conducted to date for the Transmission Line. The date and locations of the PICs are provided below:

Location 1: *Date:* Saturday, August 1, 2015
Time: 10:00 a.m. to 12:00 p.m.
Location:..... Britt Legion
511 Riverside Drive, Britt, ON

Location 2: *Date:*..... Saturday, August 1, 2015
Time: 3:00 p.m. to 5:00 p.m.
Location:..... Bobby Orr Community Centre –
Hart Trophy Room
7-17 Mary Street, Parry Sound, ON

Interim Draft Available for Review and Comment:

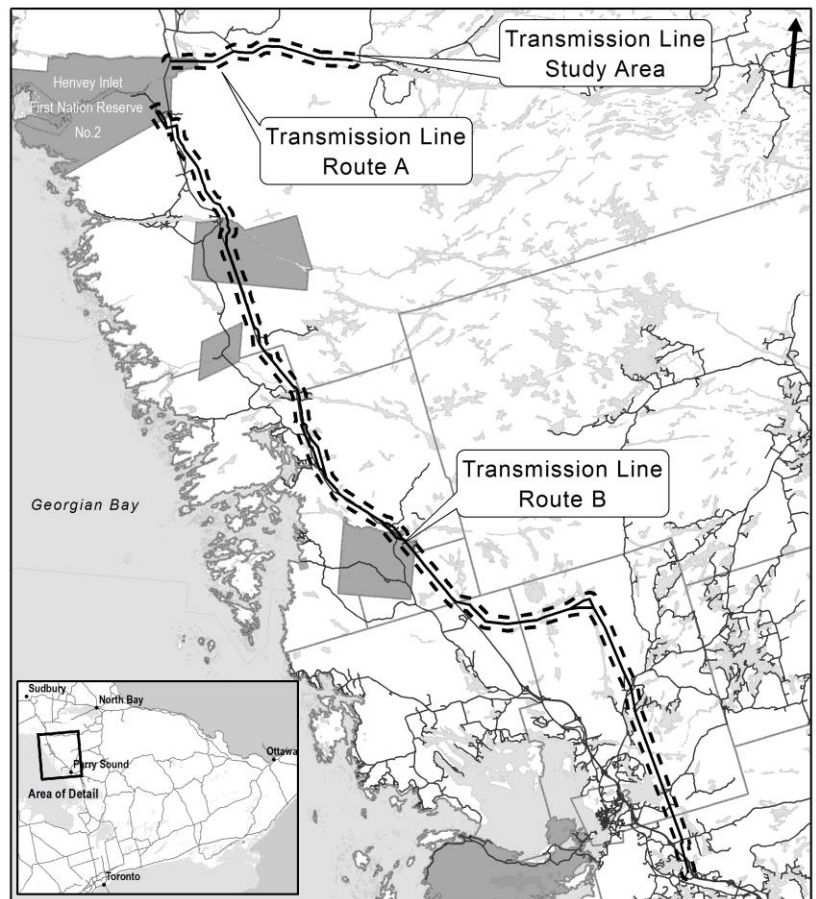
An Interim Draft ERR which includes a description of the undertaking and baseline studies for the HIW Transmission Line will be made available on July 2, 2015, on the HIW website: www.henveyinletwind.com. We encourage all interested parties to review and provide comment on this document - your feedback is important to us and will be considered as part of the assessment process. The deadline for comments on the Interim Draft ERR is August 8, 2015.

HIW Contacts and Further Information:

We are committed to engaging all stakeholders throughout the development of the Transmission Line and encourage anyone who is interested to get in touch with us at any time with questions, comments or concerns. If you are unable to attend either of these PICs and would like further information, please contact:

Kim Sachtleben, Project Developer *and/or*
Ken Noble, Project Developer
Email: info@henveyinletwind.com
Phone: 705.857.5265
Mail: Henvey Inlet Wind Office
295 Pickerel River Road
Pickерel, ON P0G 1J0

Please note: the Wind Energy Centre associated with this Transmission Line is being studied under a different Environmental Assessment process. For more information, please visit www.henveyinletwind.com.



Henvey Inlet First Nation, Ontario